

Children on Campus

Children should not be brought to the campus in lieu of appropriate child care. College facilities cannot accommodate the care of children while parents are working or attending class. Since the College and its staff cannot be responsible for the safety and welfare of children, arrangements should be made for them off-campus. Children should not be brought into classrooms, laboratories, the Testing Center, the Tutoring Center, or the Academic Computing Center because of disruption of instruction or study, exposure to material unsuitable for children, and possible danger to the children. Children on campus must be supervised by a parent or guardian at all times, and the parent or guardian is responsible for seeing that the children are mindful of others using College facilities.

Inclement Weather

In the event of an emergency or inclement weather, a decision regarding a closing or late opening will be made by 6:00 a.m. In the absence of any announcement, classes will be held.

Announcements will be made as follows:

Day Class Closings: When an individual campus is closed, all classes are canceled at that particular campus. No faculty, staff or students involved at that particular campus are to report to that campus except essential personnel who are to report as soon as possible. Closings occurring during the day will be announced by the Deans of Instruction on each campus and communicated to any other appropriate locations through site administrators.

Evening Class Closings: If a decision is not made by 6:00 a.m., an announcement regarding the cancellation of evening classes will be made as soon as possible but not later than 4:00 p.m. If there is no announcement, classes will be held.

Late Openings: Classes will begin when the college officially opens and any remaining time for instruction will be utilized. For example, if the class is scheduled to begin at 9:30 a.m. and the college opens at 10:00 a.m., instruction for that class will commence at 10:00 a.m.

Safety Notice: *If classes are held, each individual must assess conditions at the point from which that person is traveling since conditions can vary greatly throughout the service region. No one is expected to place attendance above personal safety. However, if a student does miss a class, it will be the student's responsibility to contact the professor as soon as possible to make arrangements for completing class work.*

Announcements: Closing announcements will be posted on www.germannacommunitycollege.edu. Announcements will be broadcast on local radio and television stations, and an E2 Campus message will be sent.

Weapons

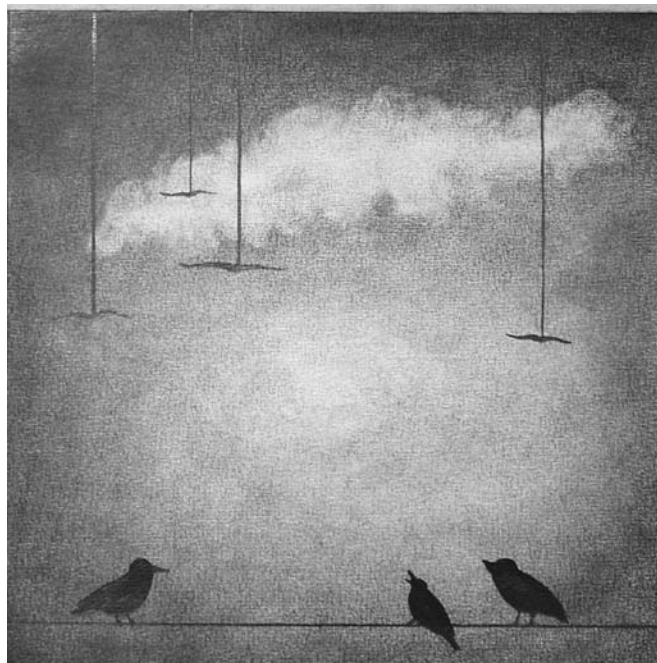
Possession or use of firearms, explosives, or any other dangerous or deadly weapons is not appropriate to the college experience. Therefore students, employees, and patrons are not permitted to possess these items on College property except when carried by bona fide law enforcement officials in their official capacities. This policy applies whether the weapon is functional or not. Any device designed to look like a weapon and/or is used by an individual to cause reasonable apprehension or harm is considered a weapon by this policy. Exceptions may be granted when approved in advance in writing by the Campus Security Manager and the President.

Germannanna Community College Access Policy

Germannanna Community College is committed to the full and total inclusion of all individuals and is dedicated to the principle of individual empowerment. To this end, services are provided to ensure equal access to all aspects of the college experience for students with disabilities through the most appropriate accommodations. Services are provided based on each student's individual needs.

Services are available to students who self-identify and provide appropriate documentation of their disability. Through accommodations and other support services on campus, Germanna Community College strives to provide a quality experience for all qualified students with disabilities. All services are provided at no charge.

Students who feel they have been denied equal access to all programs and services offered by the College may refer to the Grievance Procedure for Students with Disabilities.



Michelle Breland