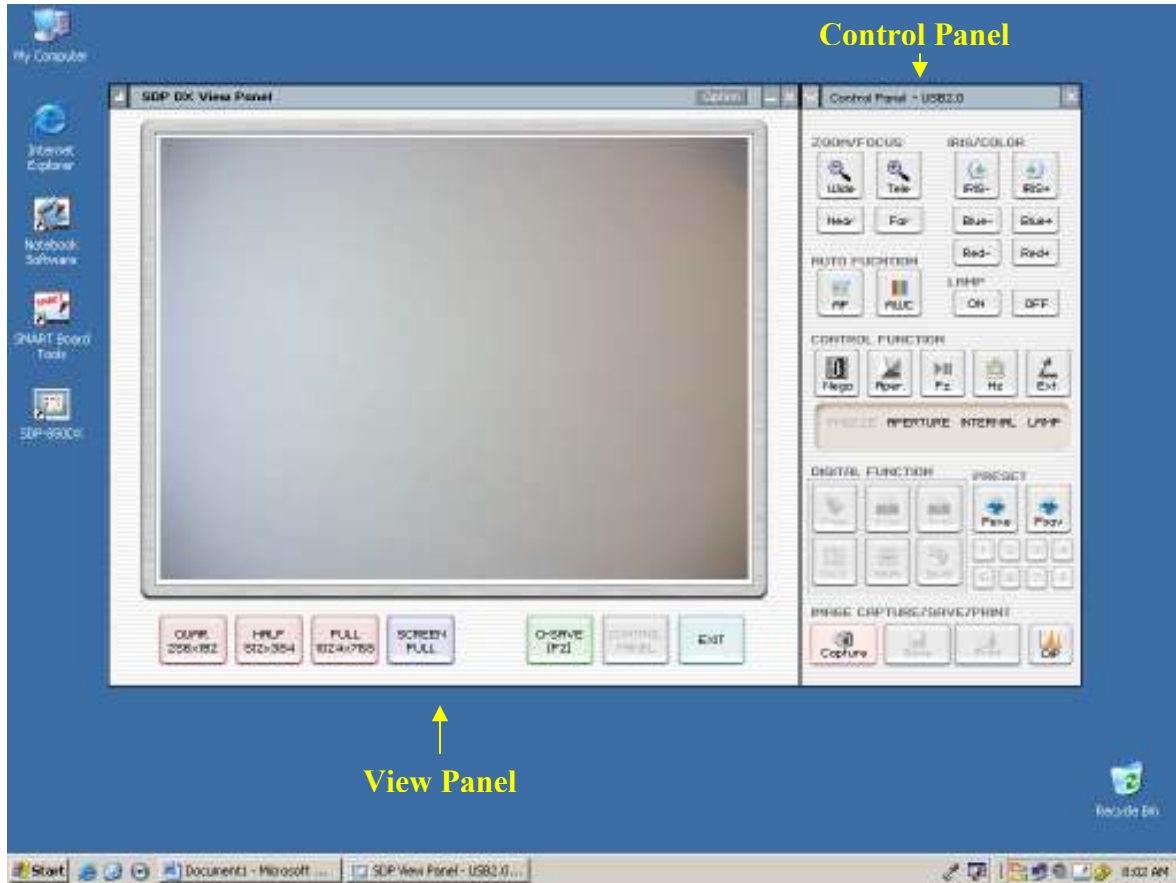


Samsung SDP-850DX Digital Presenter (Document Camera)



NOTE: A RED LIGHT ON FRONT OF DOC CAM MEANS EQUIPMENT IS OFF

1. Turn on Document Camera
2. Boot up the computer - **THE DOCUMENT CAMERA OPERATES THROUGH THE COMPUTER**
3. Double click on the **SDP-850DX** icon  on the desktop to view control panel



4. Use the **CONTROL PANEL** buttons for the following functions:
 - **ZOOM/FOCUS** - Reduce (Wide) or Enlarge (Tele) the image size of an object
 - **IRIS/COLOR (+/-)** - Lighten or darken image / Increase or decrease the red or blue color factor
 - **AF** – Automatic Focus
 - **AWC** – Adjust screen color (white balance) automatically
 - **LAMP** – Turn the head lamp on or off
 - **NEGA/POSI** - Negative (NEGA) to see the negative film. Positive (POSI) to see the general state of positive film
5. Use the **VIEW PANEL** buttons to adjust the screen size and Exit the program
 - Example: Full 1024x768 or Screen Full = full screen

*******PLEASE DO NOT FORGET TO TURN OFF THE LAMP BEFORE EXITING THE PROGRAM*******